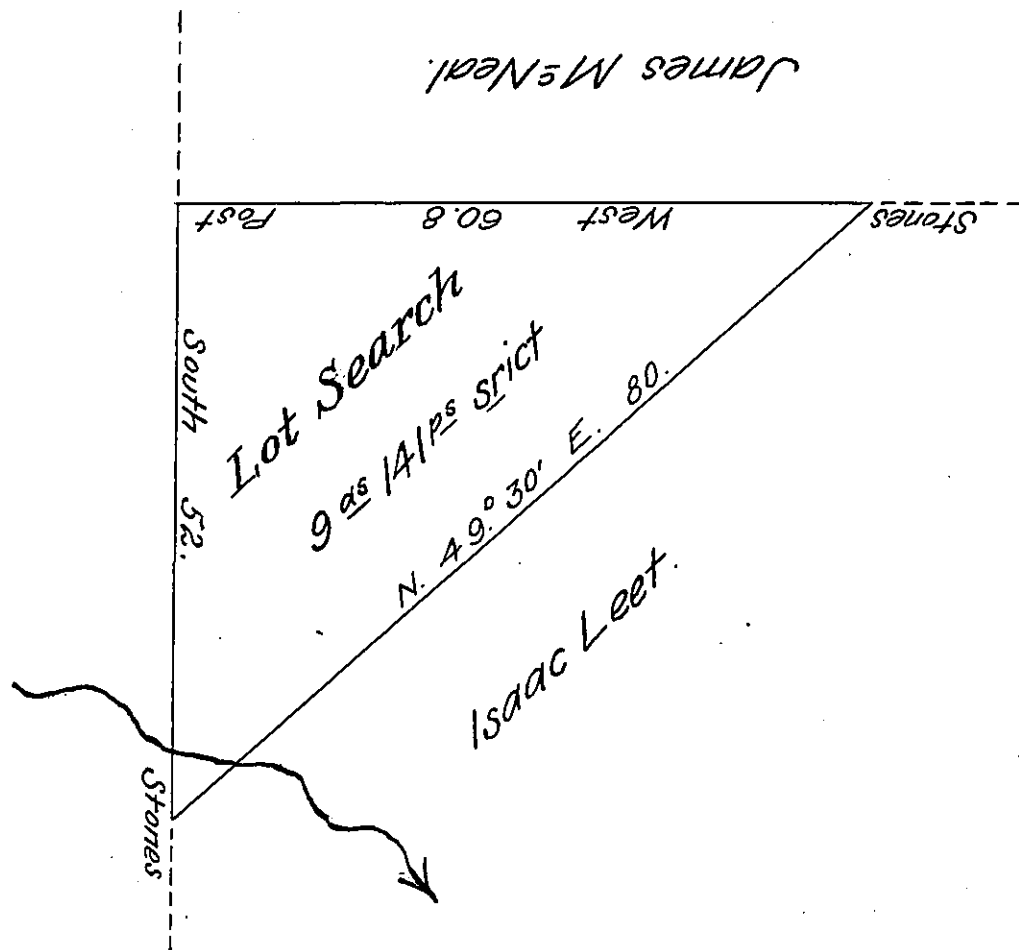


FORM NO. 1.



Draft of a tract of land situate in the Borough of
 Shickshinny, adjoining the Isaac Leet tract Containing Nine
 acres and one hundred and forty one perches strict measure
 Surveyed the above described tract of land August 3^d
 1867 to Lot Search in pursuance of his warrant dated June
 20th 1867.

John Sturdevant
 Surveyor for Luzerne Co.

Hon. J. M. Campbell }
 S. Gen. }

IN TESTIMONY that the above is a copy of the original remaining on file in
 the Department of Internal Affairs of Pennsylvania, made
 conformably to an Act of Assembly approved the 16th day of
 February 1833, I have hereunto set my hand and caused
 the Seal of said Department to be affixed at Harrisburg,
 this twenty sixth day of February 1907.

Goac B Brown
 Secretary of Internal Affairs.